



MILROY HODGSON PARTNERS
Accountants & Business Advisors

Comply, Analyse, Improve

NEWSLETTER

EDITION 23 – April 2010

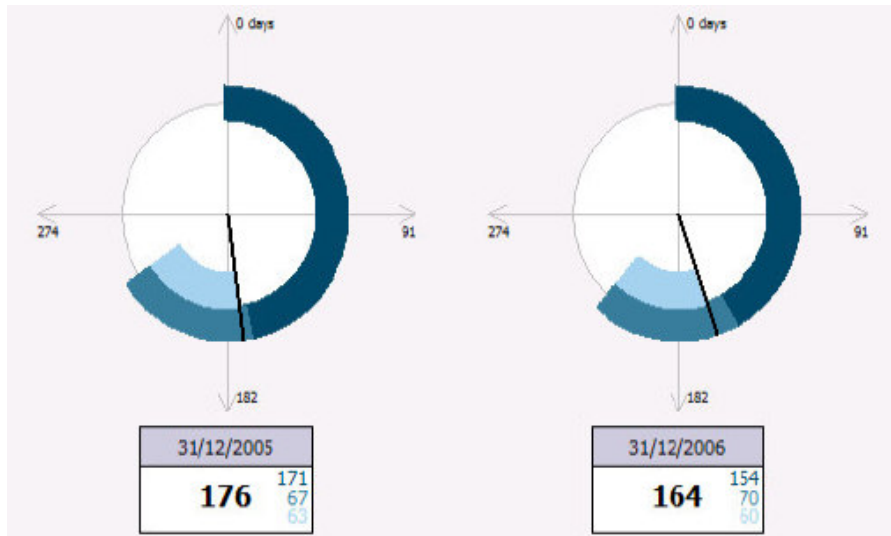
WORKING CAPITAL CYCLE

Does your business continually experience cash flow problems or shortages?

Do you know what your Working Capital Cycle is?

Your working capital cycle is a measure of your business' cash flow and can be a potential indicator of where and how your business is experiencing cash flow difficulties.

At Milroy Hodgson Partners, we have developed a concise report which will give you a quick 'snapshot' of your working capital cycle to determine how your cash flow is working in your business.



As cash is the most important aspect of any business' survival, it is extremely imperative that you know what the optimum working capital cycle is for your business, so that you can implement plans and strategies to monitor the results accordingly.

Please contact our office so we can work out your Working Capital Cycle.

If you would like to discuss any of the above contents, or would like to see how we could be of further benefit to your business, then please do not hesitate to contact our office.

Please Note: Many of the comments in this publication are general in nature and anyone intending to apply the information to practical circumstances should contact our office to seek professional advice to independently verify their interpretation and the information's applicability to their particular circumstances

DIARY DATES

MAY 2010

Friday 21

- Due date for lodgment of 2010 FBT return and payment if required.
- April 2010 monthly activity statements: final date for lodgment and payment.

Tuesday 25

- Quarterly activity statement, quarter 3 (January-March 2010) – due date for lodging and paying if you are lodging via ELS or Tax Agent Portal.

Monday 28

- Superannuation guarantee charge statement – quarterly (if required contributions were not made by the due date) for quarter 3 2009-10 (1 January – 31 March). The SGC is not tax deductible.